

12

11

10

9

8

7

6

5

4

3

2

1

REVISIONS				
CHANGE ORDER	REV	DESCRIPTION	DATE	APPROVED
510407	A	RELEASED	29-Aug-07	TG
519884	B	ADDED VIEW "F" ADDED DETAIL VIEW "G" & "H" IN SHEET 2 DIM 1505 WAS 1503, DIM 265 WAS 263.47, DIM 42 WAS 41.76, DIM 1238.6 WAS 1241	06-Feb-08	DJB
523067	C	UPDATED RETURN AIR BULKHEAD DETAIL ADDED INSULATION LOCATION ON SHEET 4 FRAME MODIFIED TO REPLACE 3-POINT LIFT SYSTEM WITH 2 POINT LIFT SYSTEM	14-May-08	DJB

NOTES:

- 1.) EURO-TRAILER: 102 MM TOTAL FRONT WALL AND RETURN DEPTH REQ'D FOR 33 PALLET LOAD IN 13610 MM LONG EURO-TRAILER.
- 2.) MOUNTING BOLT SPECIFICATIONS
METRIC -- M12 X 1.75 PITCH, CLASS 8.8
US--1/2 X 13 UNC-2B (ROLLED THREAD) GRADE 5
MEDIUM CARBON STEEL (PROPERTIES EQUAL TO CLASS 8.8 OR US -- GRADE 5), TENSILE STRENGTH 800 NEWTONS PER MILLIMETER SQUARED / US--120,000 PSI. FINISH TO BE CADMIUM PLATE & DICHROMATE .005 MM (.0002) MIN. THICKNESS AND HARDNESS RC 23-30.
- 3.) MOUNTING BOLTS TO BE SECURELY FASTENED IN THE TRAILER FRONT WALL IN SUCH A MANNER THAT THE MOUNTING NUTS MAY BE PROPERLY TORQUED TO 75 NEWTON METERS (US--60FT. LBS.) FROM OUTSIDE OF TRAILER. BOLTS MUST BE PERPENDICULAR TO TRAILER WALL.
- 4.) INSTALLATION DRAWINGS SHOW CERTAIN TRAILER STRUCTURAL DETAILS ONLY TO THE EXTENT THAT THEY RELATE TO MOUNTING THE THERMO KING UNIT. THESE DETAILS ARE NOT RECOMENDATIONS, NOR DO THEY CONVEY ENDORSEMENT OR WARRANTY BY THERMO KING FOR THE STRUCTURAL INTEGRITY OF THE TRAILER.
- 5.) TRAILER FRONT WALL TO BE STRUCTURALLY STRONG ENOUGH TO SUPPORT WEIGHT OF REFRIGERATION UNIT.
SLX 30 792 KG.
SLX 50 846 KG.
- 6.) IF AN AIR SYSTEM IS USED , AN ACCESS AREA IN THE DUCT MUST BE PROVIDED TO THE EVAPORATOR FOR SERVICING EVAPORATOR COMPONENTS. NO PART OF THE DUCT SYSTEM SHOULD BE PERMANENTLY FASTENED TO THE UNIT SINCE THIS COULD INTERFERE WITH UNIT REMOVAL.
- 7.) SLX 3-POINT LIFTING BARS CANNOT BE MODIFIED TO SUIT 2-POINT LIFT SYSTEM AND MUST BE DISPOSED OF. HOWEVER, EXISTING SL 2-POINT LIFTING BARS CAN BE USED WITHOUT MODIFICATION

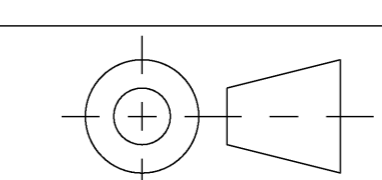
GOI	ITEM NO	PART/DWG NUMBER	REV	DESCRIPTION	MATL SPEC	MATL QTY

LIST OF MATERIAL

INGERSOLL-RAND IS THE SOLE OWNER OF THIS DRAWING AND ALL INFORMATION IN IT, WHICH ARE PROTECTED BY COPYRIGHT AND OTHER LAWS AND MAY BE SUBJECT TO LAWS REGARDING EXPORTING INFORMATION OUTSIDE OF THE U.S. THIS DRAWING MAY BE USED ONLY BY ITS RECIPIENTS FOR THE PURPOSE FOR WHICH IT IS PROVIDED AND ONLY BY THE RECIPIENT, WHO AGREES THAT IT WILL NOT, WITHOUT INGERSOLL-RAND'S PRIOR WRITTEN PERMISSION: 1) DISCLOSE NOR USE THIS DRAWING OR THE INFORMATION IN IT EXCEPT AS SPECIFIED ABOVE; OR 2) MAKE ANY COPIES OF OR EXTRACTS, REVISIONS, OR UPDATES FROM THE DRAWING. ALL COPIES MUST BE RETURNED TO INGERSOLL-RAND UPON COMPLETION OF THE WORK FOR WHICH THEY HAVE BEEN PROVIDED OR UPON ANY EARLIER REQUEST.

UNLESS OTHERWISE SPECIFIED DIMENSIONS ARE IN MM. INTERPRET DIM AND TOL PER ASME Y14.5M - 1994

THIRD ANGLE PROJECTION



FINISH -

CAD GENERATED DRAWING. DO NOT MANUALLY UPDATE

UNLESS OTHERWISE SPECIFIED TOLERANCES ON DIMENSIONS PER TKS09109

DRAWN	DATE
TG	16-Jul-07
CHECKED	DATE
DJB	16-Jul-07
APPROVED	DATE
DJB	16-Jul-07
ENG APPVL	

IR Ingersoll Rand
Thermo King

TITLE
INSTALLATION DWG
EURO TRAILER
SLX

SIZE	CODE	IDENT NO	DWG NO	REV
AI			1E39533	C
SCALE 0.100				SHEET 1 OF 6

12

11

10

9

8

7

6

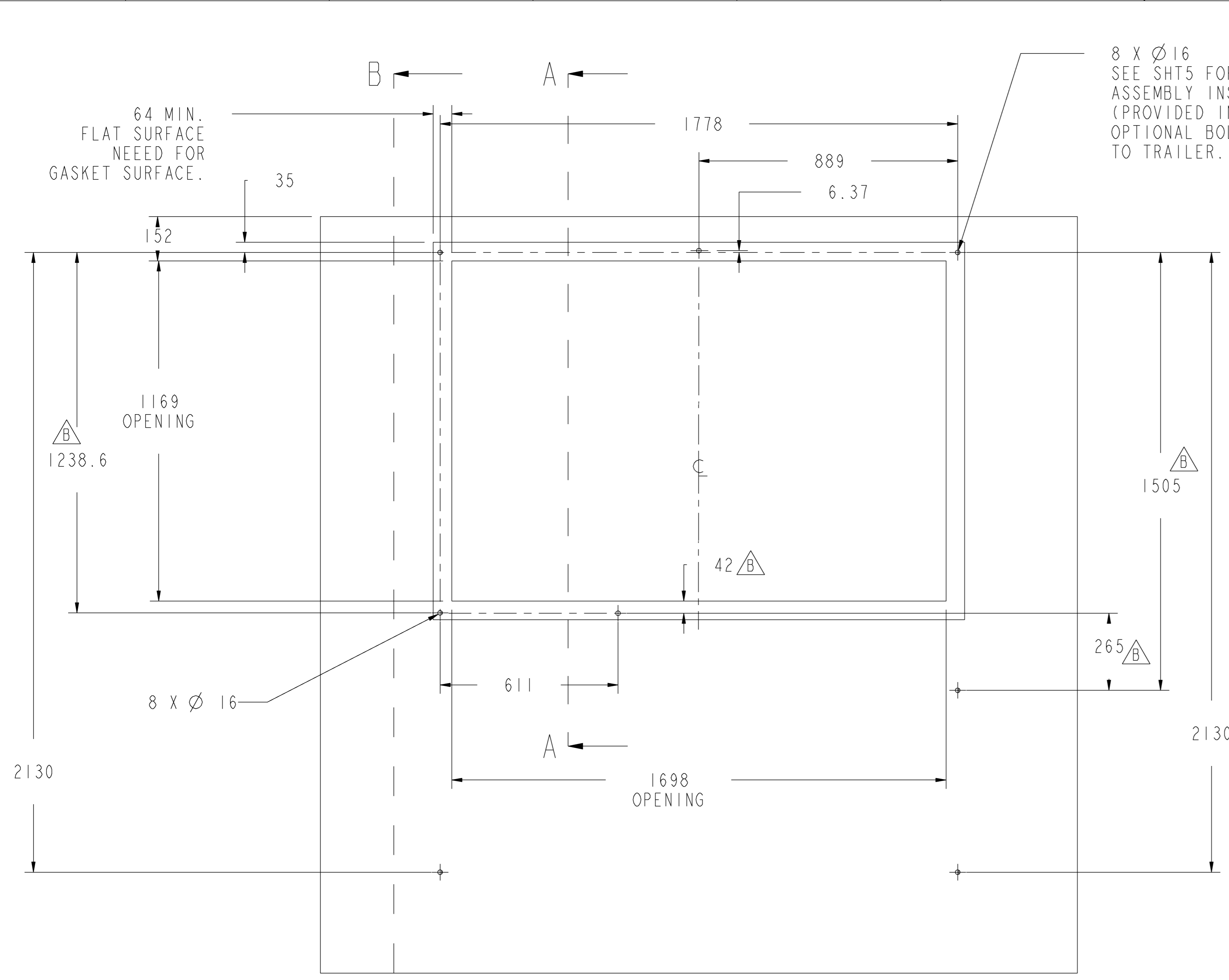
5

4

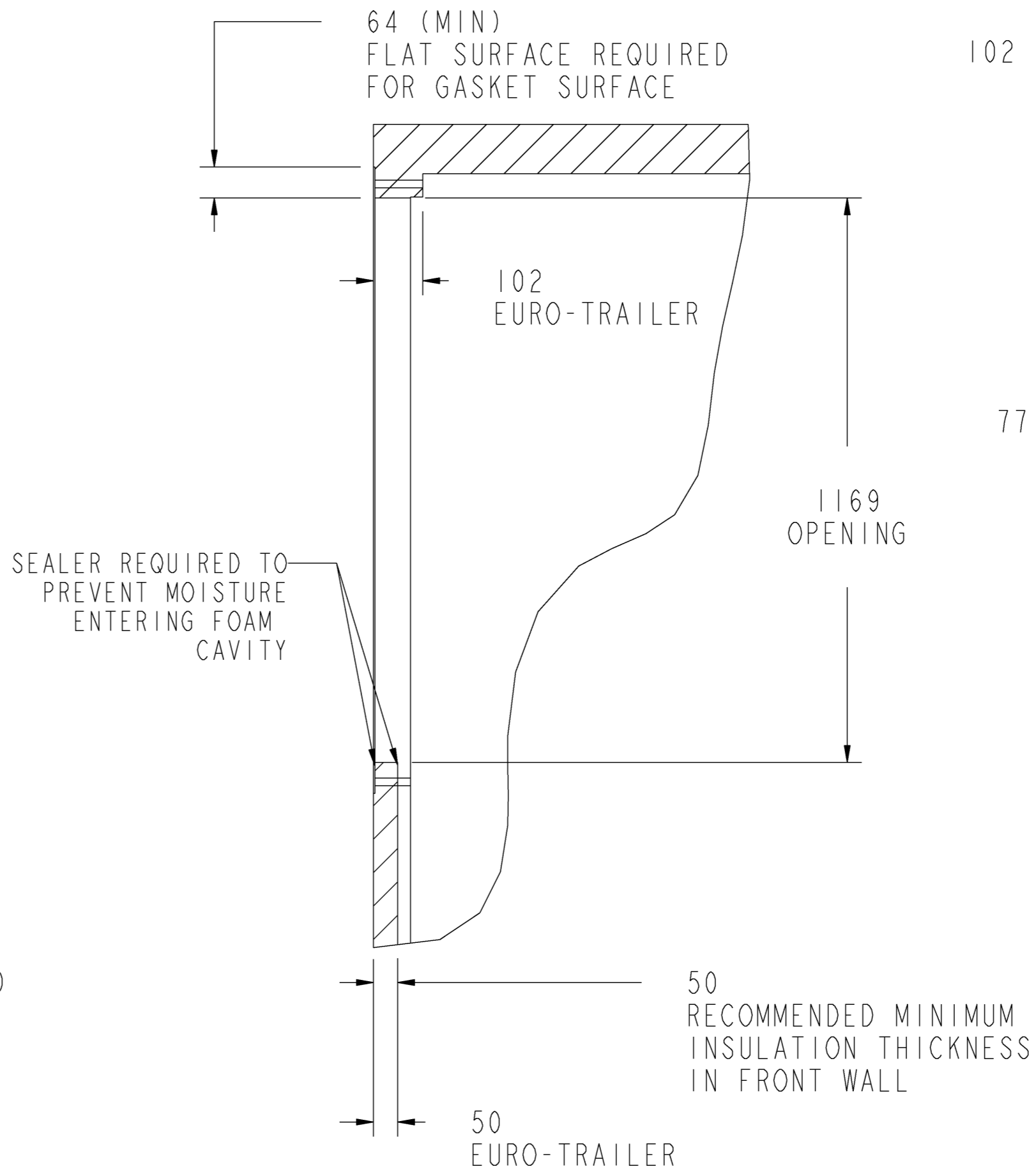
3

2

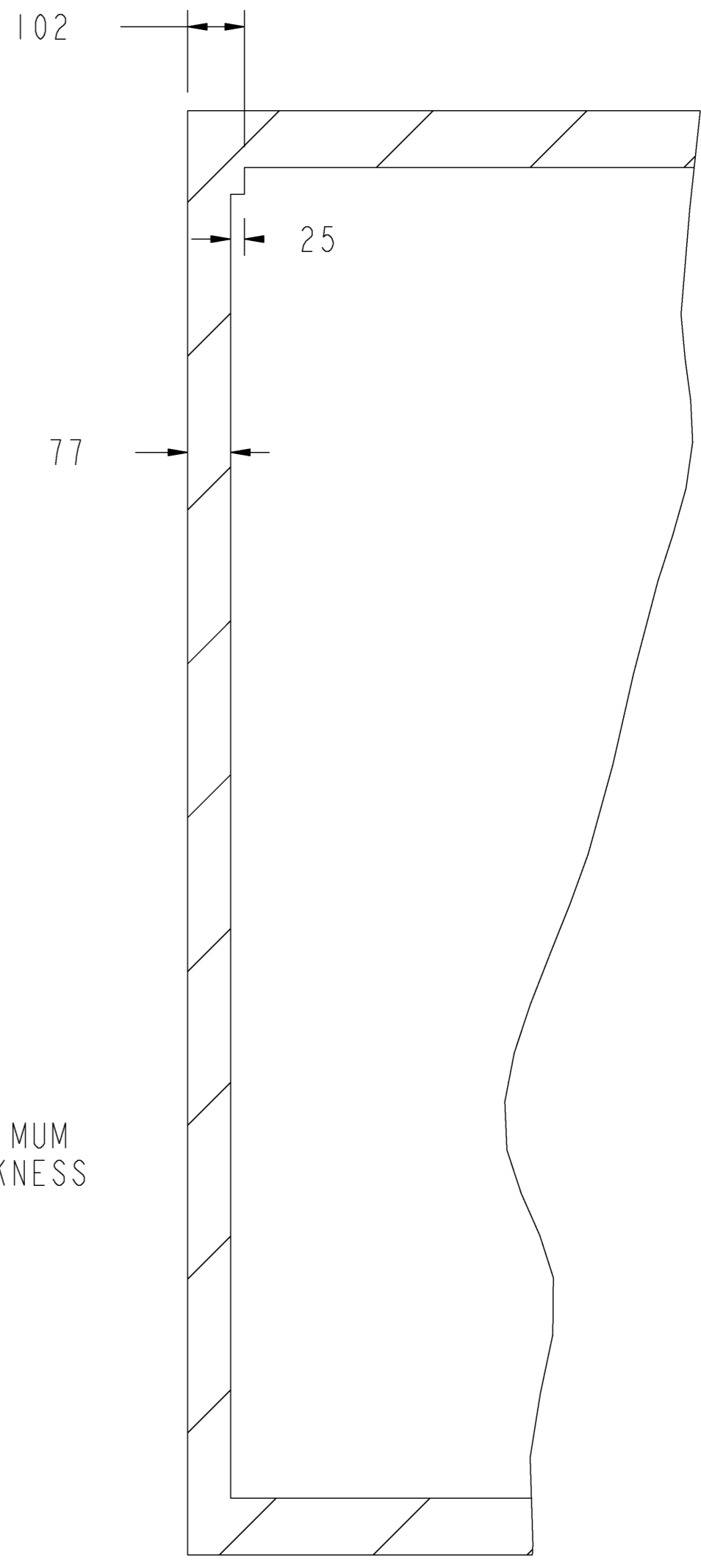
1



8 X Ø 16
SEE SHT5 FOR MOUNTING BOLT
ASSEMBLY INSTALLATION
(PROVIDED IN KIT) OR FOR
OPTIONAL BOLT MOUNTED
TO TRAILER.



SECTION A-A



SECTION B-B

TRAILER OPENING MUST BE SQUARE.
DIAGONAL DIMENSIONS MUST BE
WITHIN ± 3.0

IMPORTANT:

LOCATION OF UNIT MOUNTING BOLTS AND OPENINGS IN TRAILER FRONT WALL ARE CRITICAL. DIMENSIONS MUST BE MAINTAINED AS SHOWN. FRONT WALL SURFACE AT ALL MOUNTING LOCATIONS MUST BE FLAT SURFACE PLANE WITHIN 64 MM.

UNIT MOUNTING BOLTS (8 LOCATIONS) M12 X 1.75 PITCH (METRIC) OR 1/2 X 1/3 UNC-2B (IMPERIAL) TO EXTEND 60 MM BEYOND FRONT WALL. 2 X MOUNTING BOLTS BEHIND THE CONTROL BOX CAN BE ACCESSED BY SWINGING OPEN THE ENTIRE CONTROL BOX. THIS MOUNTING BOLT SHOULD BE CUT TO LENGTH.

BOLTS FURNISHED AND INSTALLED BY TRAILER BUILDER. 'T' BOLTS & NUTS SUPPLIED WITH EU INSTALLATION KITS MAY BE USED IF TRAILER BUILDER DOES NOT SUPPLY UNIT MOUNTING BOLTS.

IR Ingersoll-Rand Thermo King			
SIZE	CODE	IDENT NO	DWG NO
AI			1E39533
SCALE 0.100			REV C
SHEET 2 OF 6			

12

11

10

9

8

7

6

5

4

3

2

1

H

G

F

E

D

C

B

A

2076
UNIT WIDTH

1024

2280
UNIT HEIGHT
BOTTOM PANEL
NOT FITTED

1160

736

2302
UNIT HEIGHT
BOTTOM PANEL
FITTED

537.4
UNIT DEPTH
(FRONT TO REAR)

436.7
UNIT DEPTH
(FRONT TO GASKET SURFACE)

269 MINIMUM
RECOMMENDED

52 MINIMUM
RECOMMENDED

AIR RETURN
BULKHEAD

2396

82
MINIMUM
RECOMMENDED

32.0
DUCT TEE
FLOOR

SECTION C-C

IR Ingersoll-Rand.
Thermo King

SIZE	CODE	IDENT NO	DWG NO	REV
A1			1E39533	C
SCALE 0.100			SHEET 3 OF 6	

12

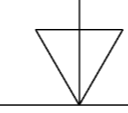
11

10

9

8

7



6

5

4

3

2

1

H

G

F

E

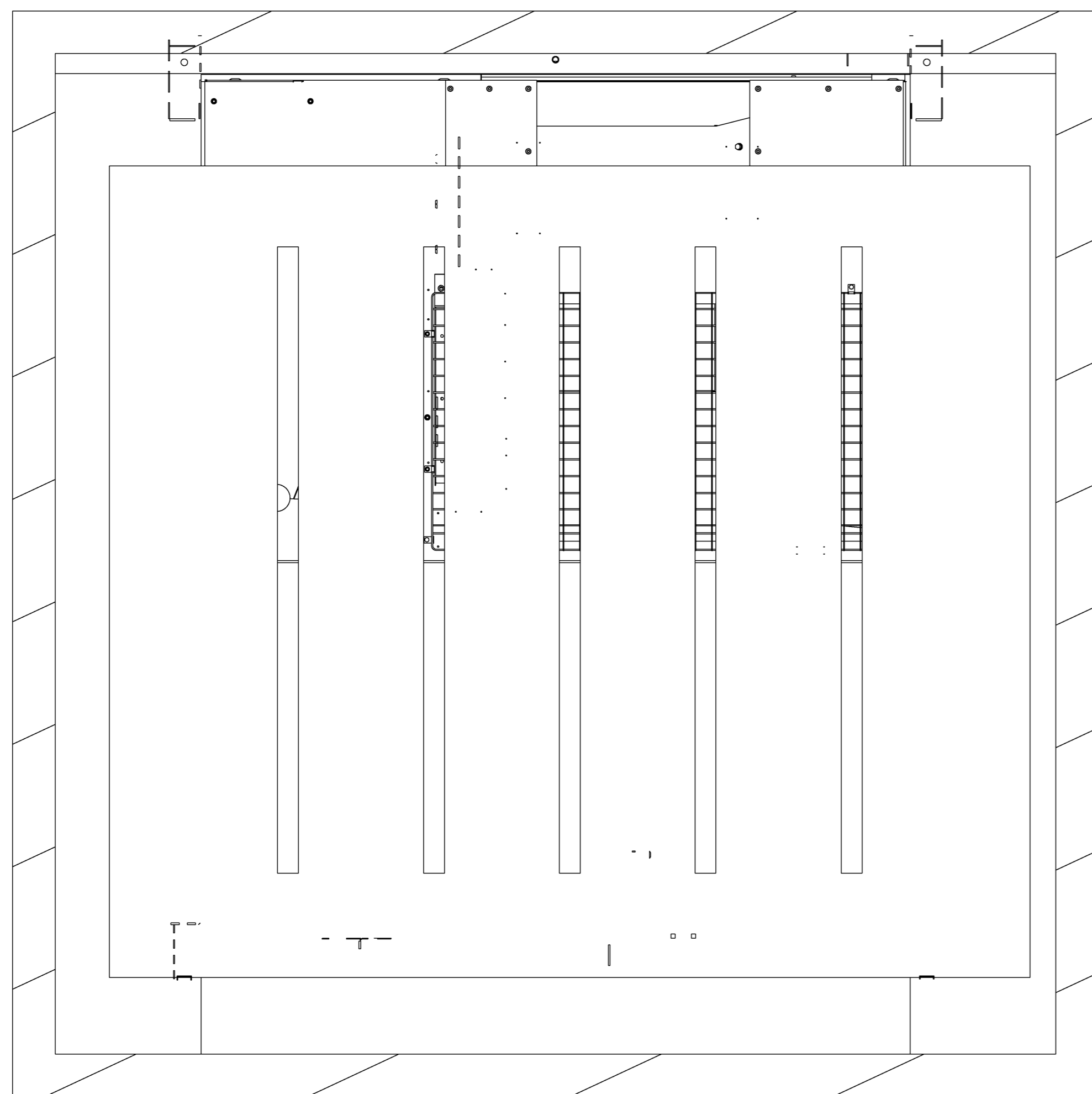
D

C

B

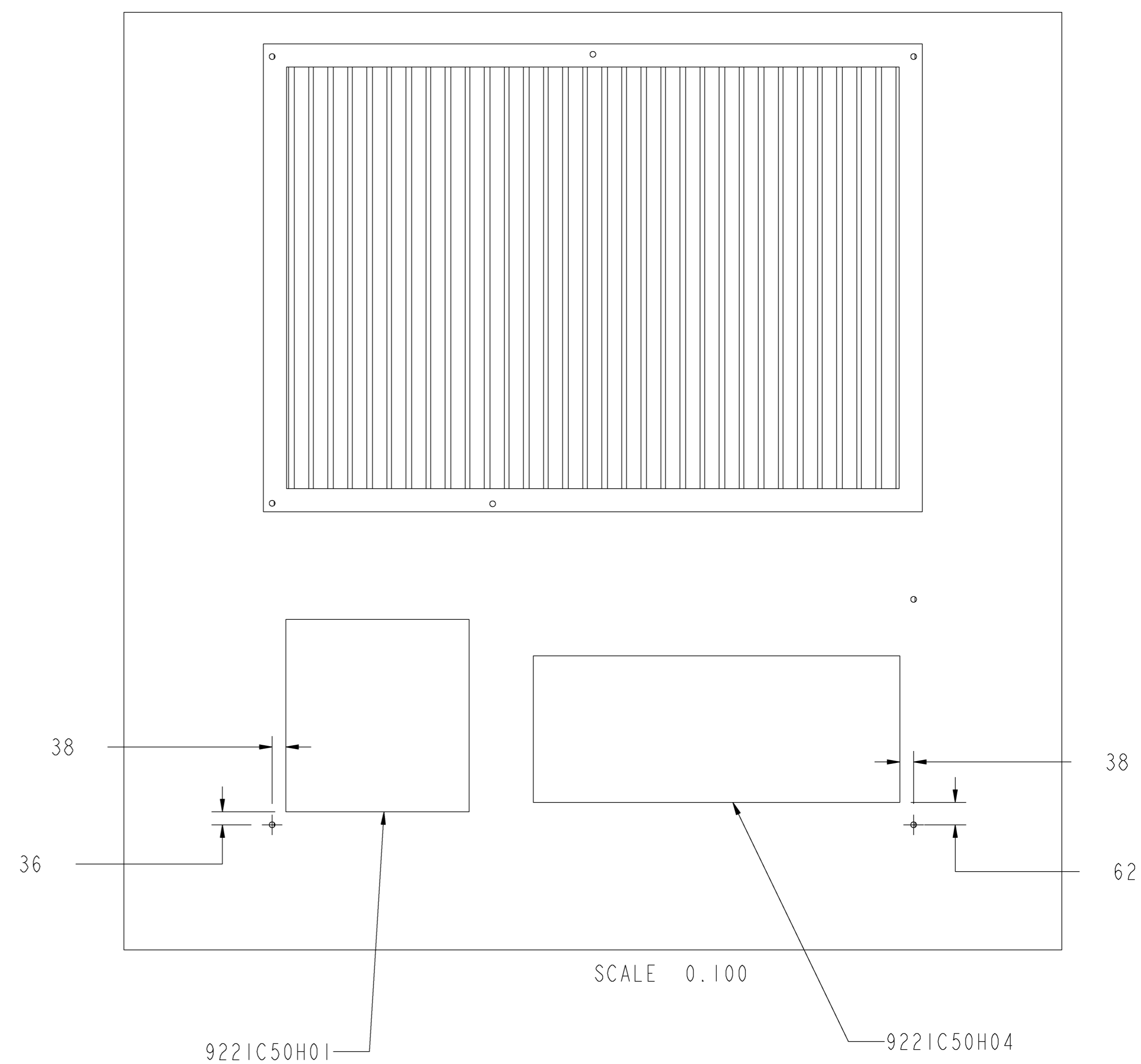
A

RETURN AIR BULKHEAD
PERFORATIONS REQUIRED
FOR AIRFLOW



SECTION G-G
SCALE 0.100

FOAM INSULATION LOCATION



SIZE	CODE	IDENT NO	DWG NO
AI			1E39533
SCALE 0.011			REV C
SHEET 4 OF 6			

12

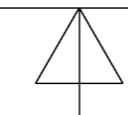
11

10

9

8

7



6

5

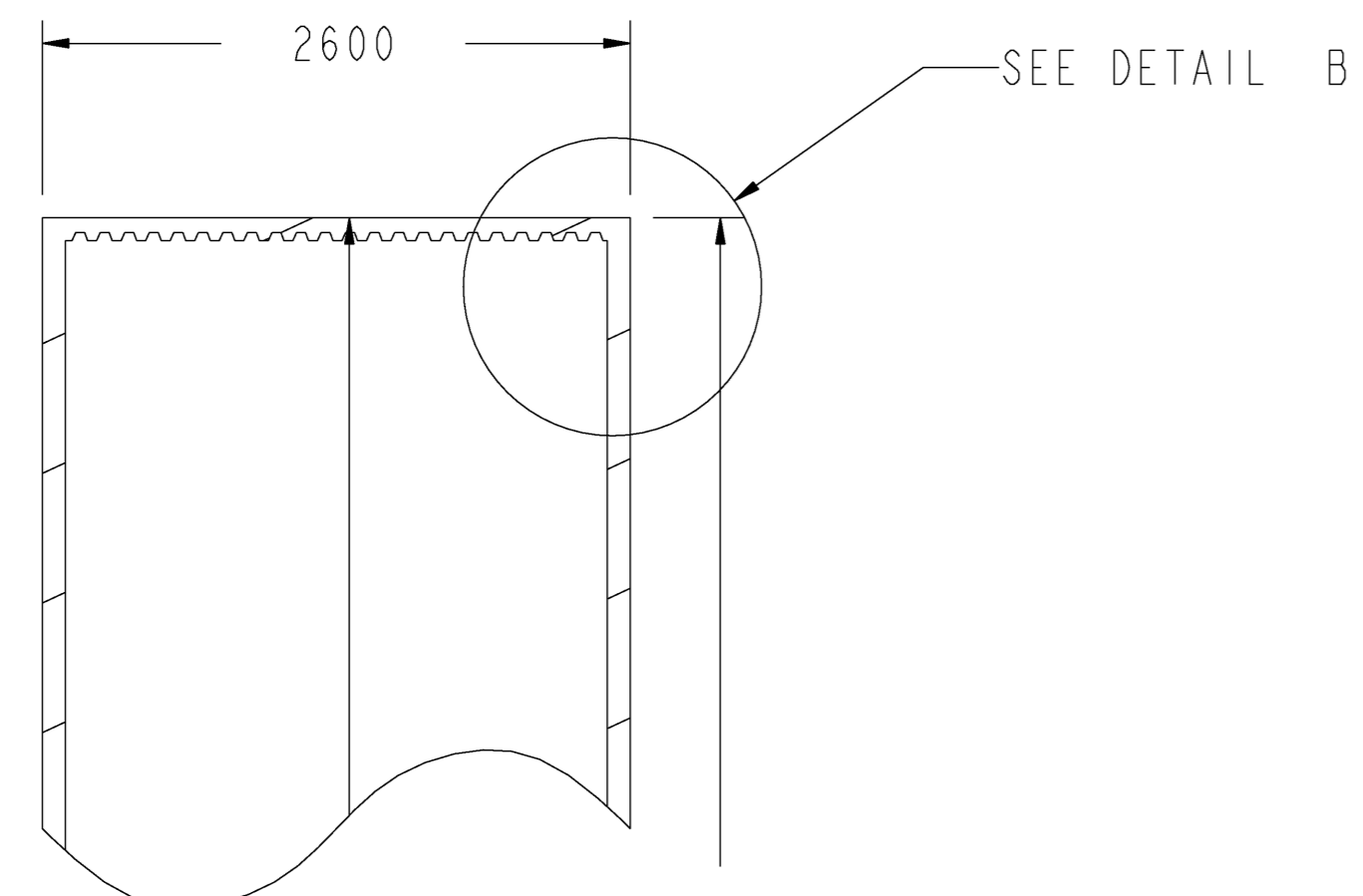
4

3

2

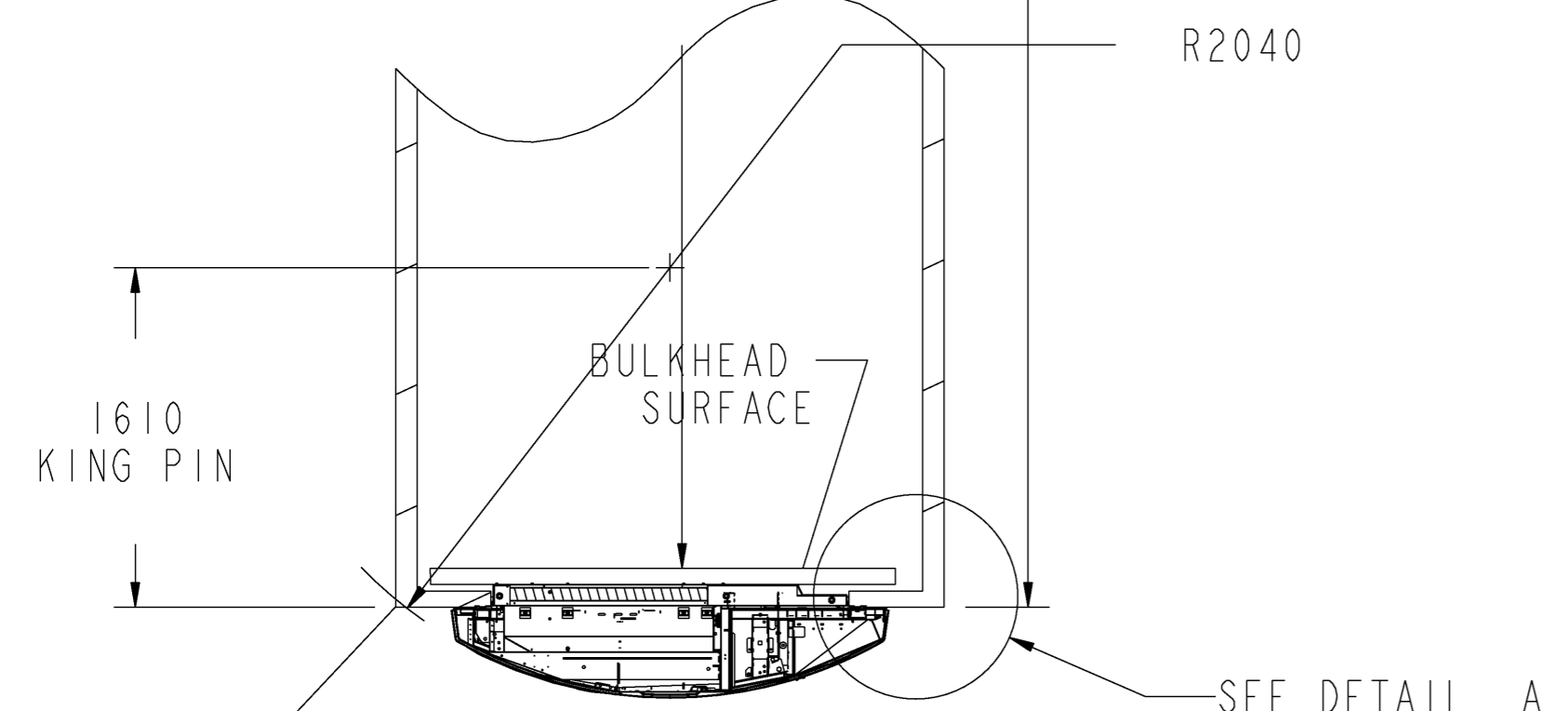
1

12 11 10 9 8 7 6 5 4 3 2 1



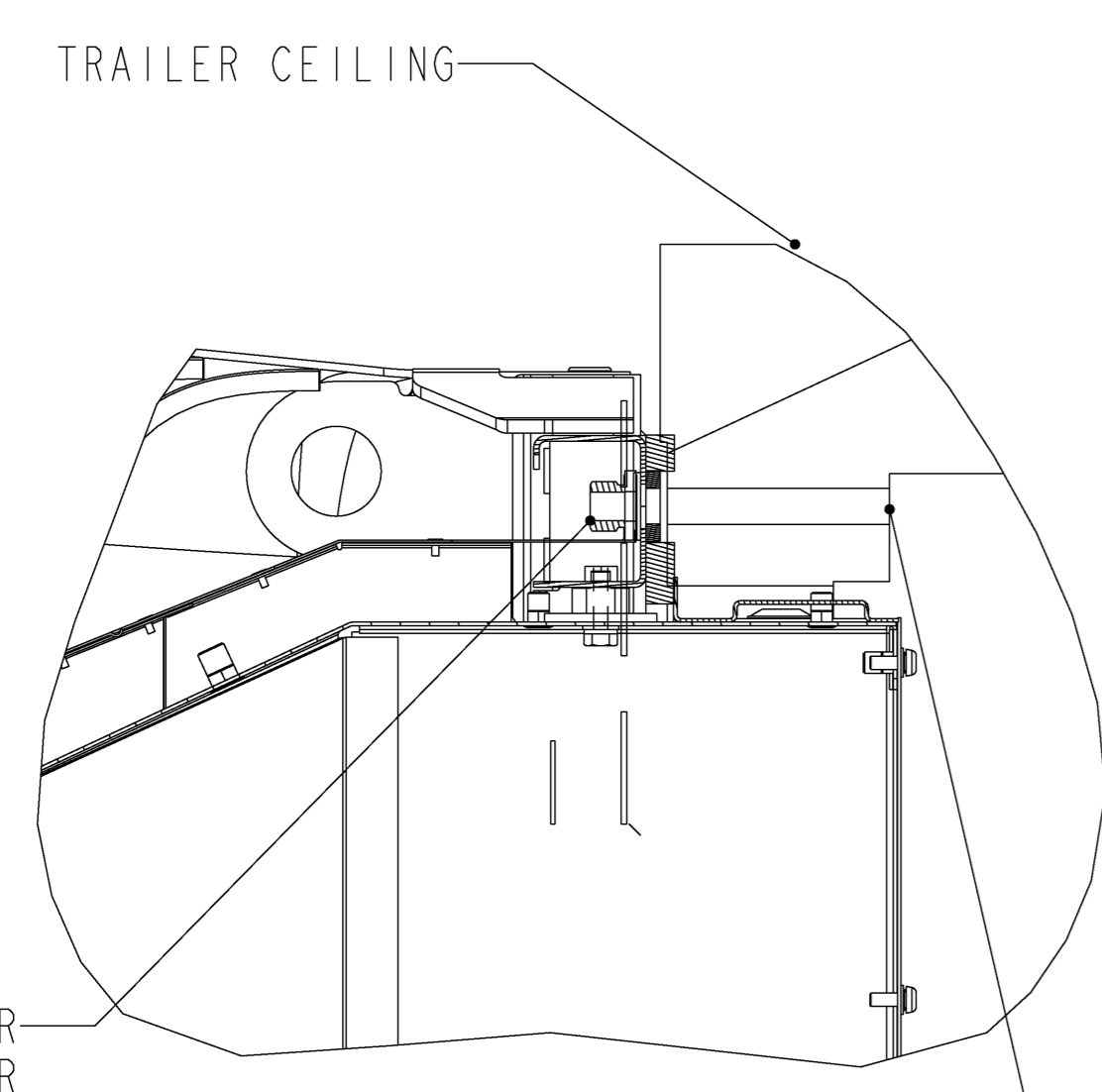
(33 EURO-PALLETS PLUS STACKING CLEARANCE

13610

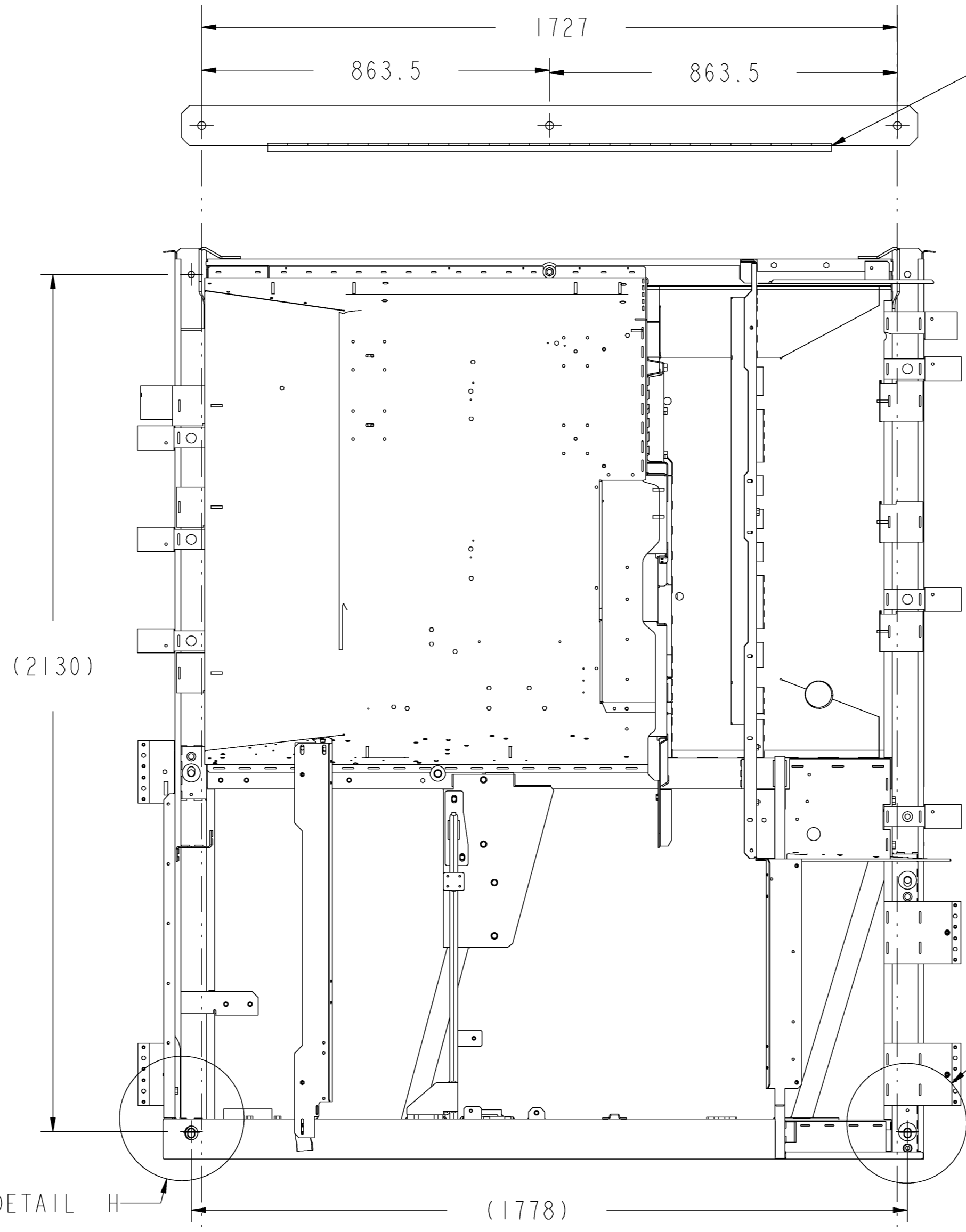


SECTION D-D
SCALE 0.030

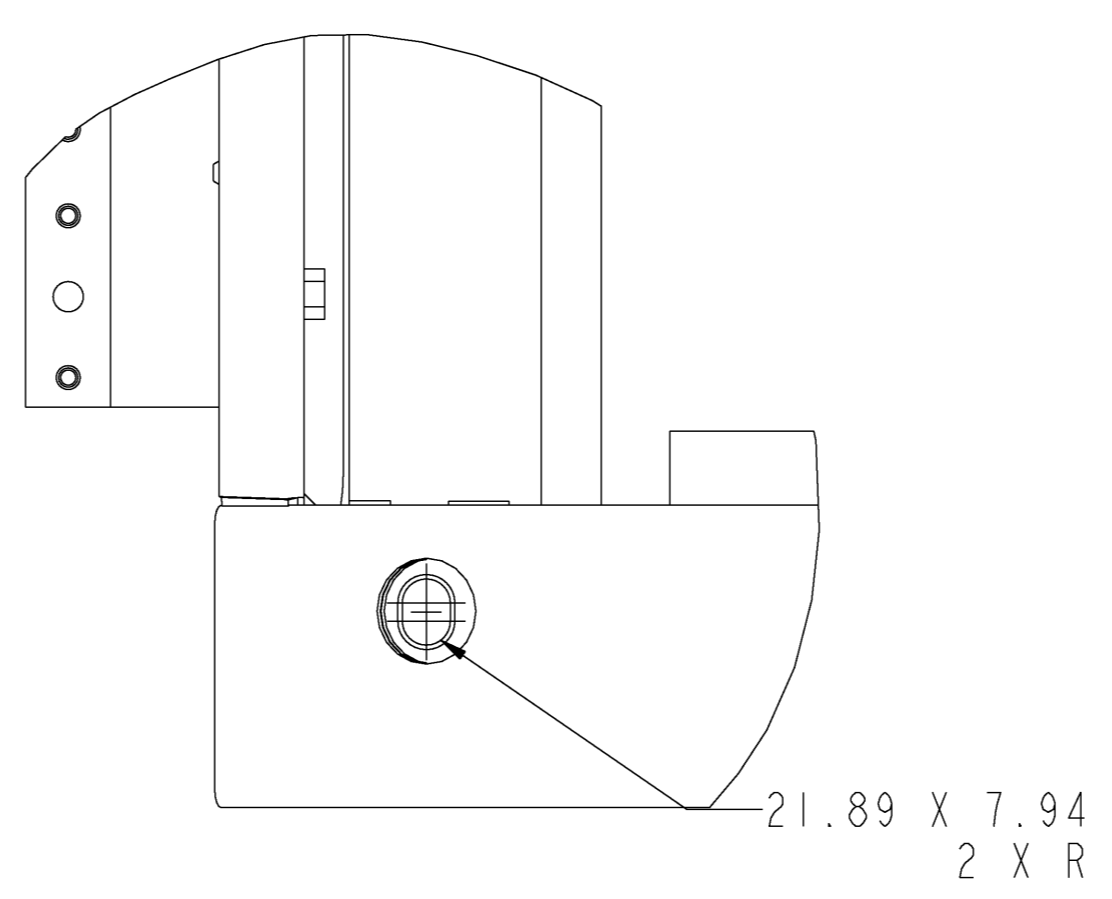
ON SOME TRAILERS IT MAY BE NECESSARY TO RELOCATE THE FRONT CORNER CLEARANCE LIGHTS FROM BEHIND UNIT TOP COVER. LIGHTS MAY BE MONTED IN CORNER RADIUS ON TRAILER.



SECTION E-E



VIEW F-F
SCALE 0.100

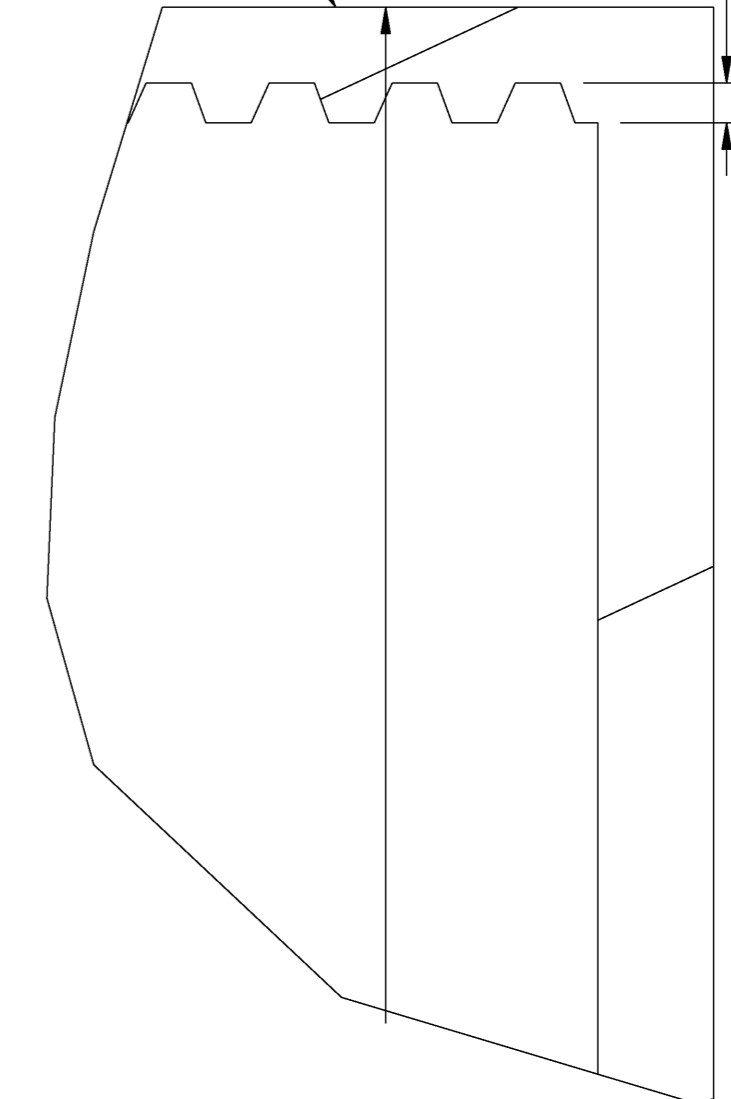


DETAIL H
SCALE 0.400

SLX LIFT BAR

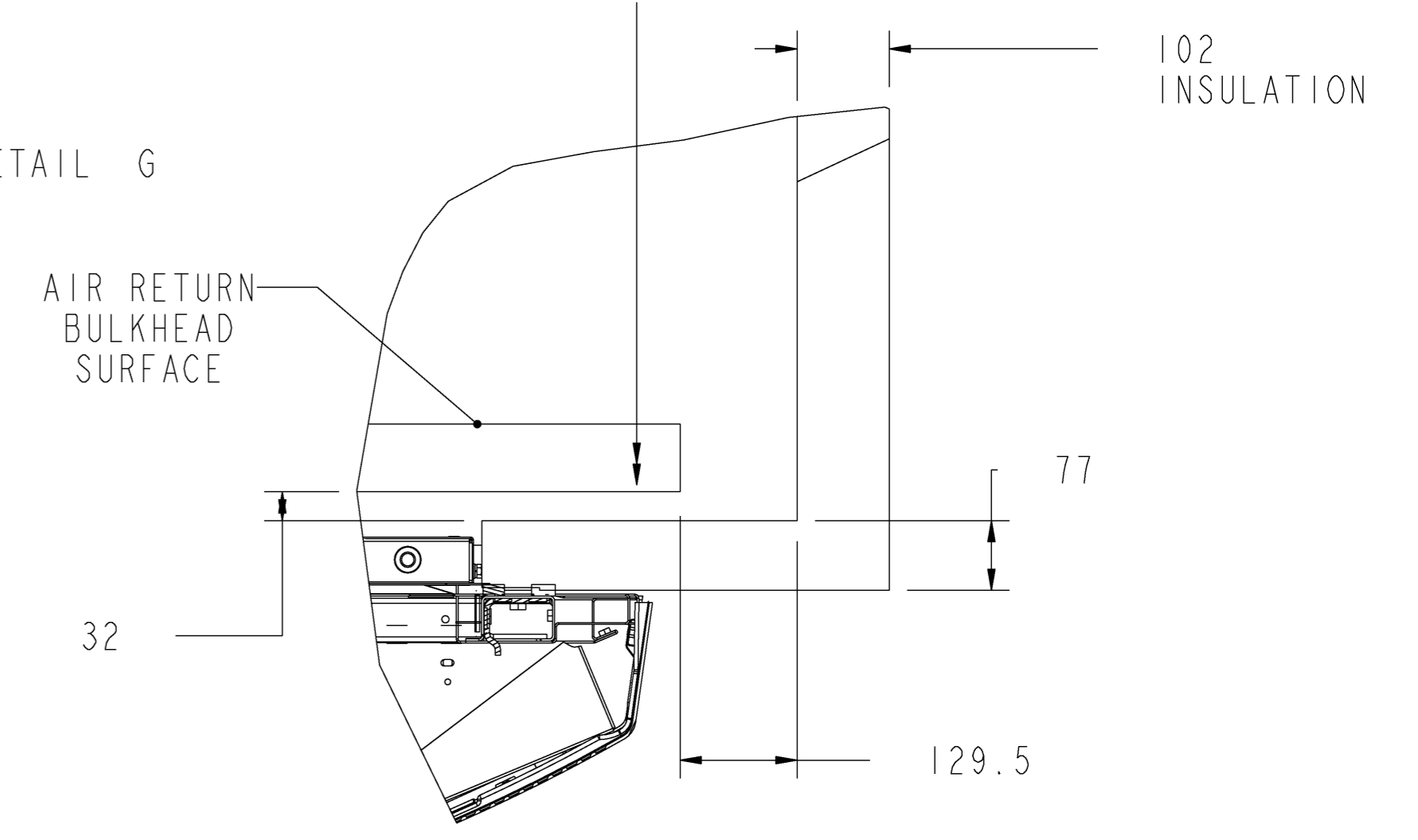
REAR DOOR INCLUDING SLX HINGE AND FASTENERS PLUS AIR FLOW PASSAGES.

35 FREE AIR FLOW AREA

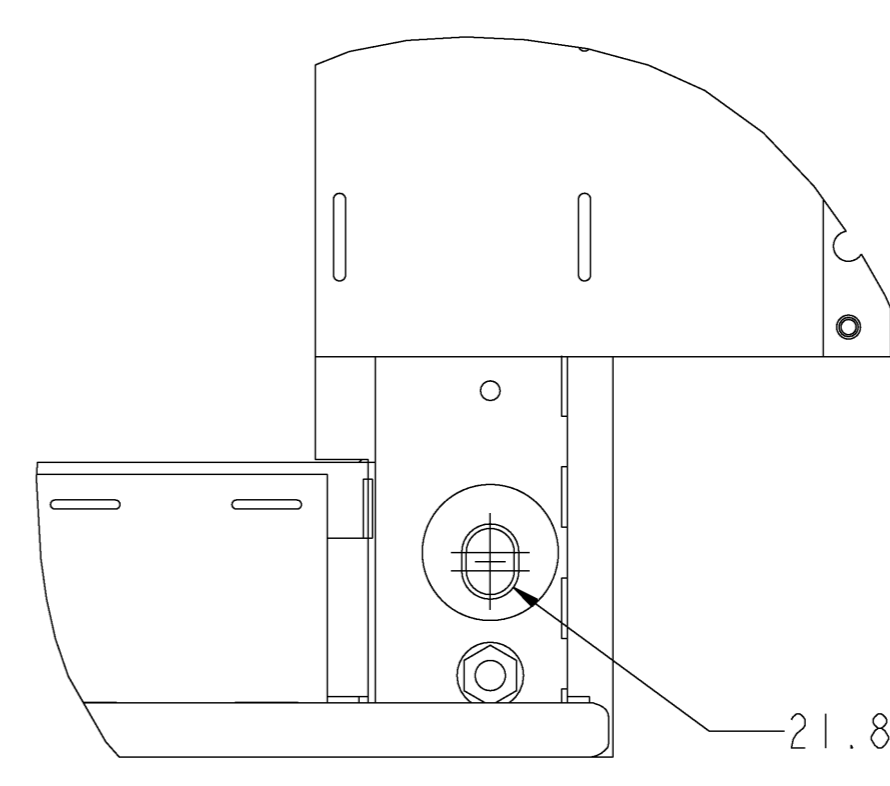


DETAIL B
SCALE 0.150

33 EURO PALLET PLUS STACKING CLEARANCE.



DETAIL A
SCALE 0.150



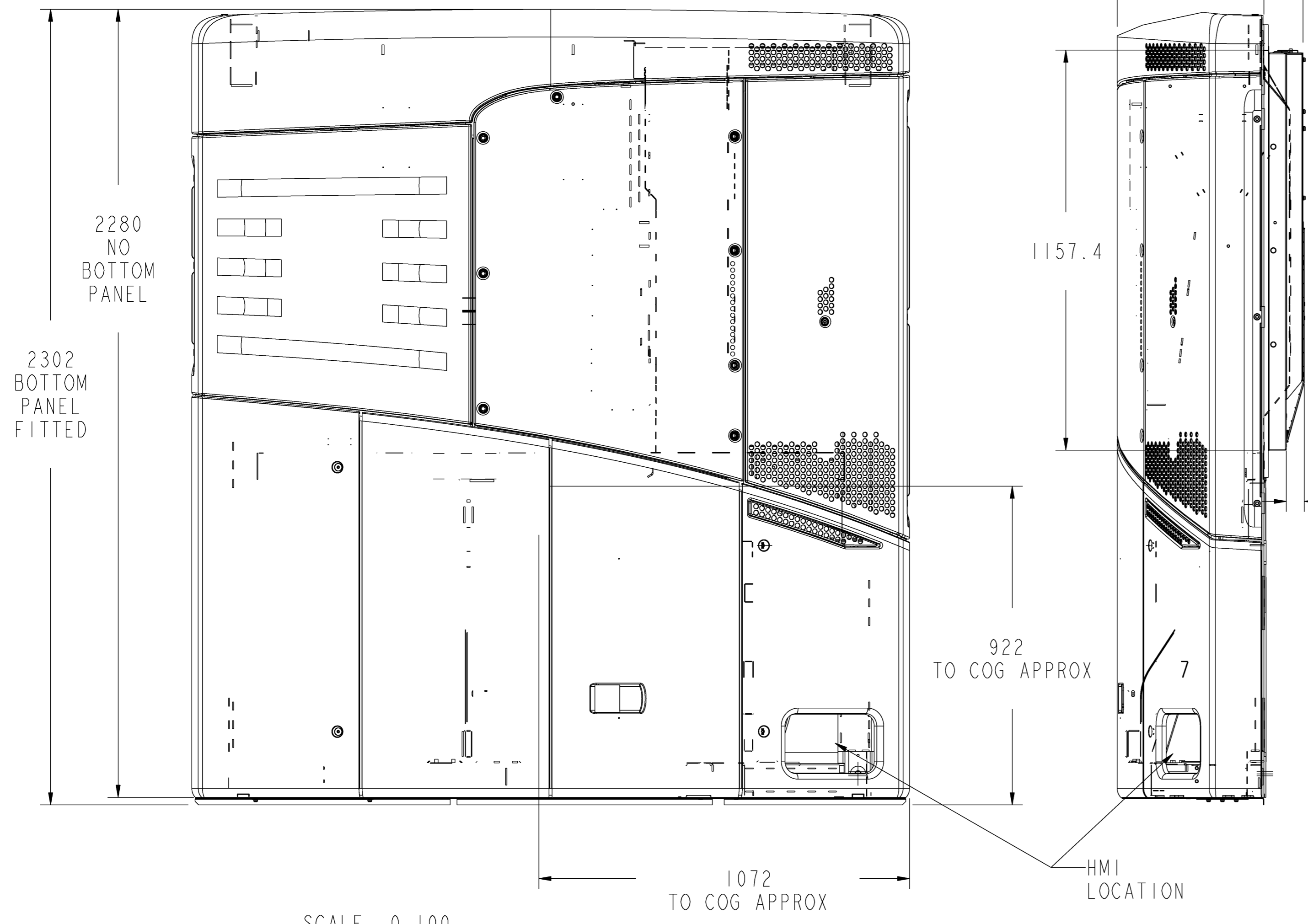
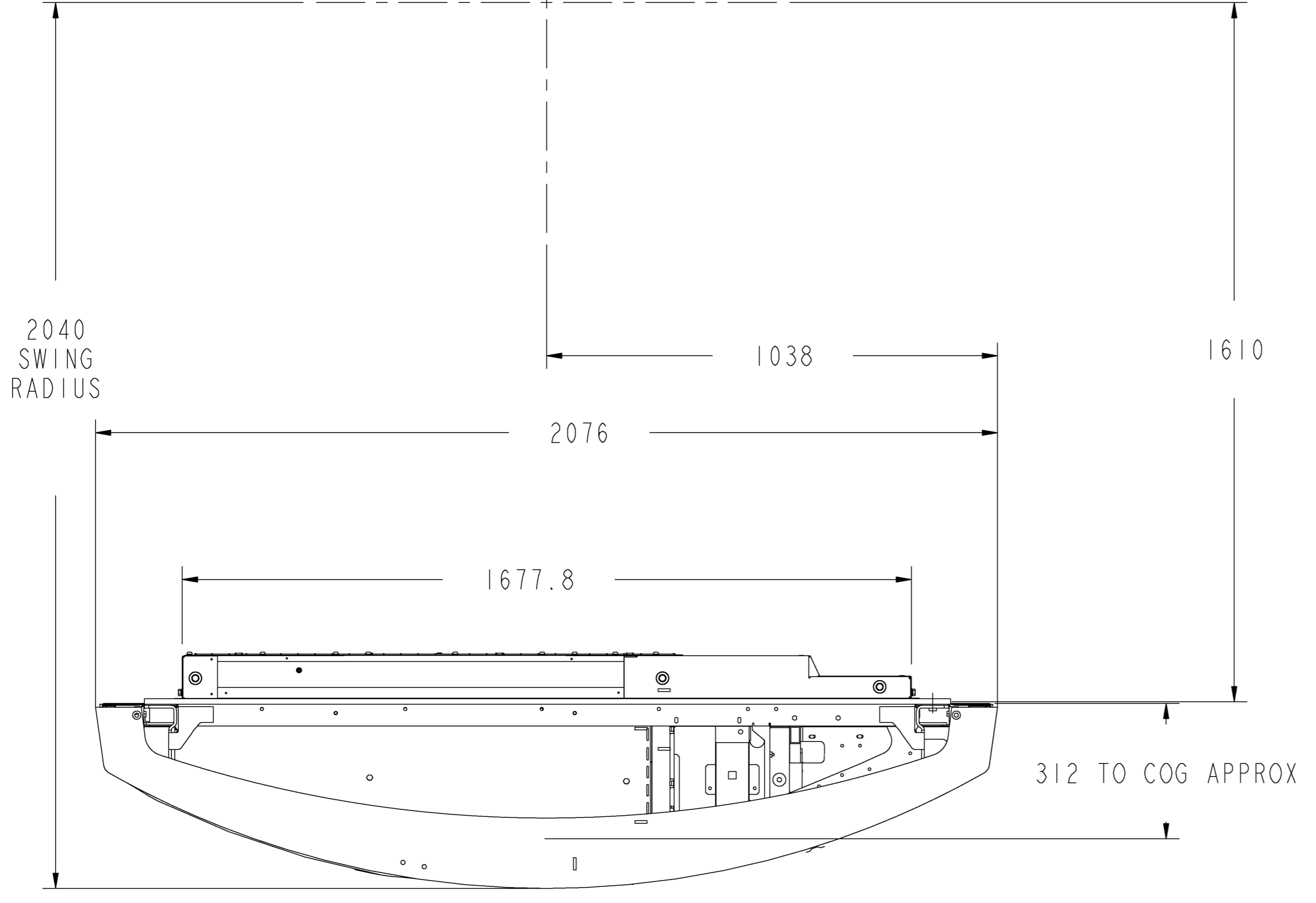
DETAIL G
SCALE 0.400

		SIZE	CODE	IDENT NO	DWG NO	REV
		AI			1E39533	C
SCALE 0.100				SHEET 5 OF 6		

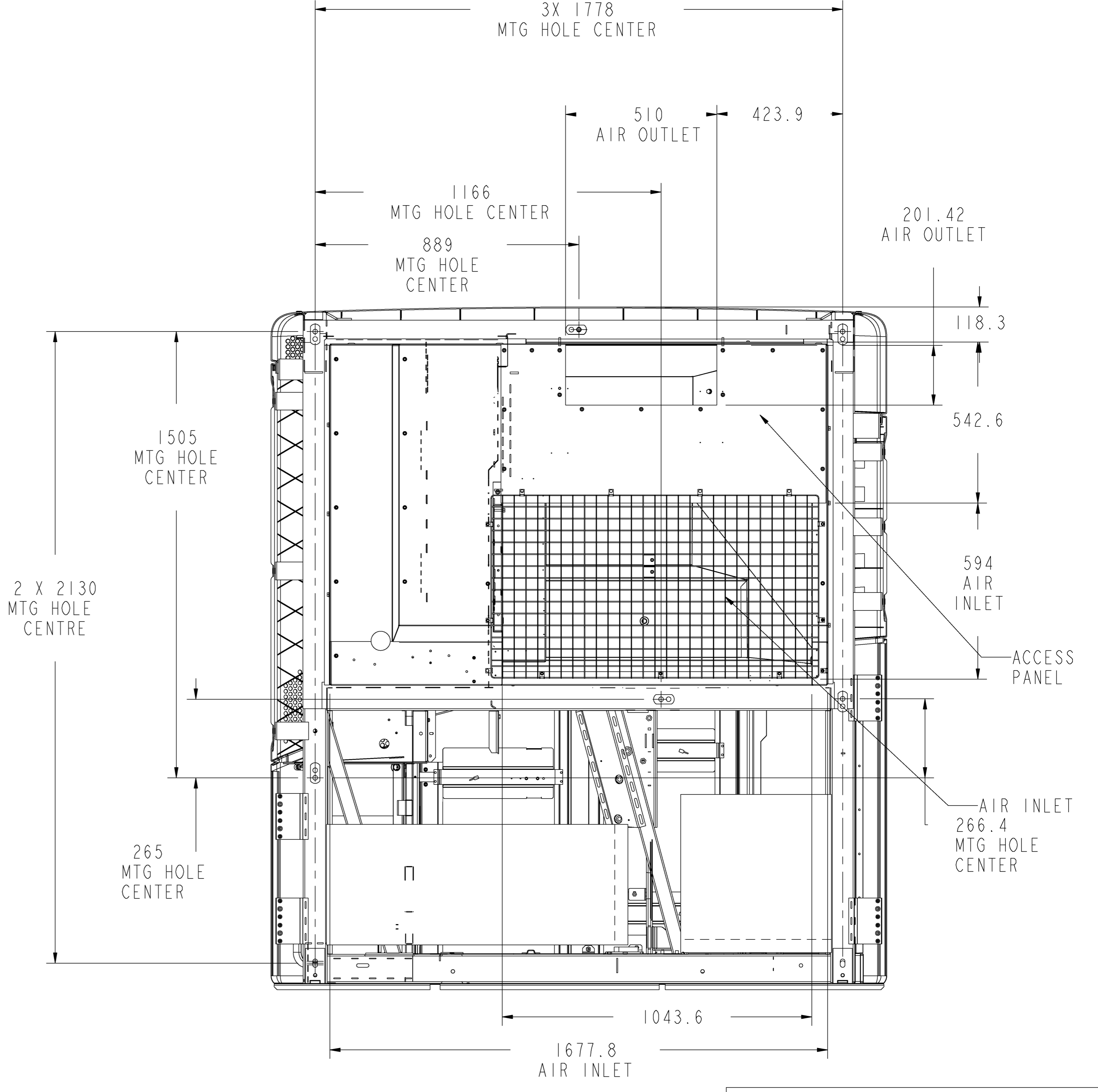
12 11 10 9 8 7 6 5 4 3 2 1

12 11 10 9 8 7 6 5 4 3 2 1

H G F E D C B A



SCALE 0.100



IR Ingersoll-Rand		Thermo King	
SIZE	CODE	IDENT NO	DWG NO
AI			IE39533
SCALE 0.100			REV C
SHEET 6 OF 6			

12 11 10 9 8 7 6 5 4 3 2 1